

**Panel mounted socket**  
Part no. 1387ZA

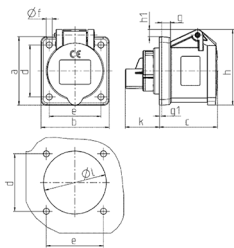


- screw terminals
- straight

**Technical specifications**

Ampere	16 A
Poles	4 p
Voltage	400 V
Clock position	6 h
Hertz	50-60 Hz
Connection technology	Screw terminals
Contact	standard
Protection type	IP 44
Flange	72x65 mm
Fixing hole	52x52 mm
Weight	147 g
Declaration of Conformity	EAC

**Drawing**



Drawing 1 MB 259	Amp. Poles	16		
		3	4	5
Dim. in mm	a	62	72	72
	b	62	65	65
	c	54	54	54
	d	47	52	52
	e	47	52	52
	f	5,5	5,5	5,5
	g	8	8	8
	g1	2	2	2
	h	68	77	85
	h1	7	7	11
	k	32	32	32
	l	50	52	57
	Terminal for cond. cross section (mm <sup>2</sup> ) min.-max.	1,5 1,5 1,5	1,5 1,5 1,5	1,5 1,5 1,5
		—4	—4	—4