

### PRODUCT FEATURES

- Compact and slim profile achieved by one-piece extruded diffuser, it guarantees 100% no water intrusion
- Dual Lumen Output in one luminaires (1.2m and 1.5m): 2 steps selectable lumen which equivalent to two lamps (HO) and single lamp version (LO); enhancing inventory flexibility
- Compatible with attachable PIR Sensor (LA11155), allowing to form a master and slave in lighting system.
- Energy saving with efficacy up to 120lm/W
- Tool-less installation (loop-in/ loop-out with push-in terminal)
- IP66 and IK08 rated
- Compatible with 4 x 2.5mm<sup>2</sup> and 6 x 2.5mm<sup>2</sup> cable with M20 cable gland for ON/OFF and DALI version respectively
- Flicker free
- Theft proof mounting accessory is available



### APPLICATIONS

- Car parks
- Underground Areas
- Warehouses
- Workshops

## PRODUCT INFORMATION

Model Number	FOB77500v0-ds
Product Code	FOB77500v0-ds+840+SV16
MM Code	MM10968

## ELECTRICAL INFORMATION

Input Voltage	220-240 VAC
Frequency	50/60 Hz
Input Current	195 mA
Power	33/17 W
Power Factor	0.9
Surge Protection	1000
Inrush Current	24.2 A
Inrush Duration	350 µs

## DIMMING AND CONTROLS

Dimmability	No
-------------	----

## PHOTOMETRICAL INFORMATION

Luminous Flux	4000/2300
Luminous Efficacy	121 lm/W
Colour Temp	4000 K
CRI	Ra80
Beam Angle	120 °
Beam Angle Selectable	No
Colour Consistency	6
Flickering	≤3% @100Hz
SVM	0.4
P <sub>ST</sub> LM	0.8

## LIFE PERFORMANCE

Lifetime	50,000hrs L80B50@Ta25°C
Number of Switching Cycles	100000

## STANDARDS AND APPLICATION

IP	IP66/IP66
IK	8
Protection Class	CL II
Glow Wire	850 °C
Photobiological Safety Group	RG0
Working Temperature	-30 to +50 °C
Energy Class	D
Standards Compliance	IEC/EN60598-1, IEC/EN60598-2-1

## INSTALLATION AND CAPABILITIES

Installation	Surface mount/Suspended
Min. Distance from Lighted Object	0.1 mm

B10	6
B16	10
C10	10
C16	16

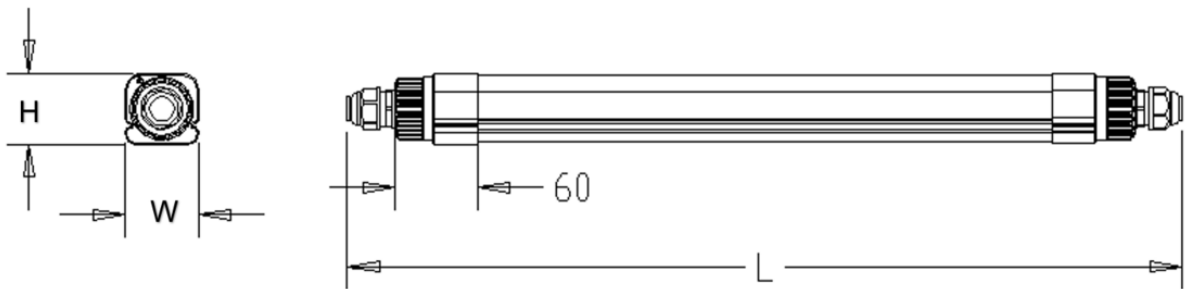
MECHANICAL AND METERIAL

Optics Material	Polycarbonate
Housing Material	Polycarbonate
Housing Colour	SV16
Length	1210 mm
Width	55 mm
Height	55 mm
Weights	900 g

Remarks

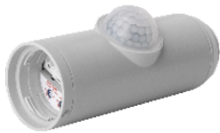
End cap pack with film,□□□ECA32WP

DIMENSIONAL DRAWING



OPTIONAL ACCESSORIES

Model No.	MM Code	Description
LA11155	-	PIR Sensor Module
LA11165	-	

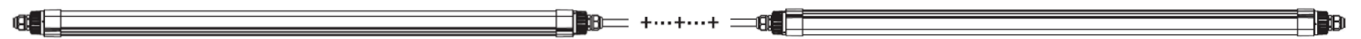


LA11155

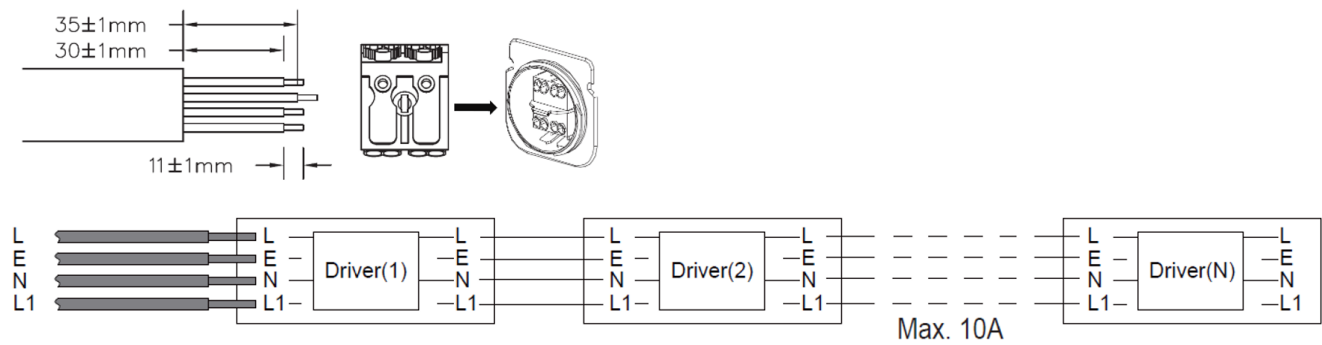


LA11165

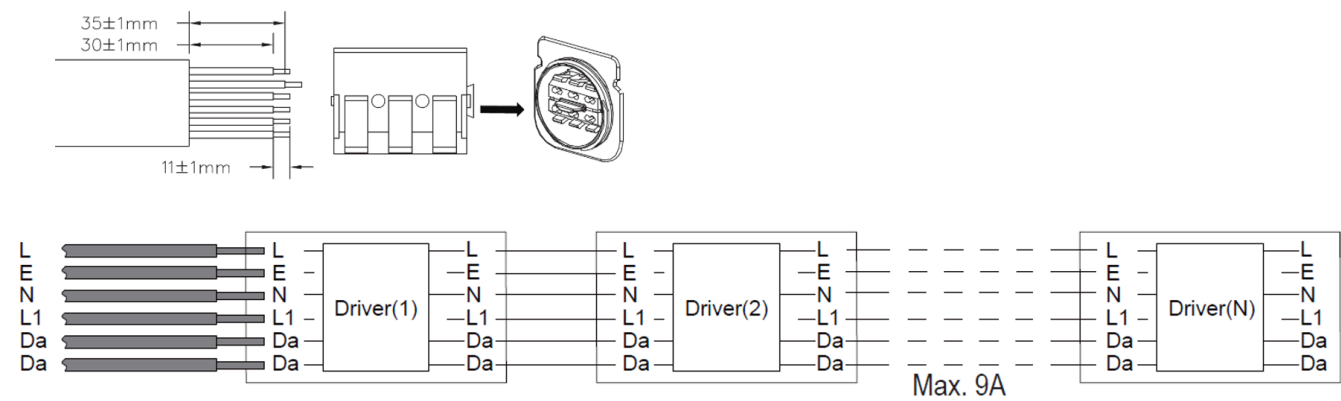
WIRING DIAGRAM



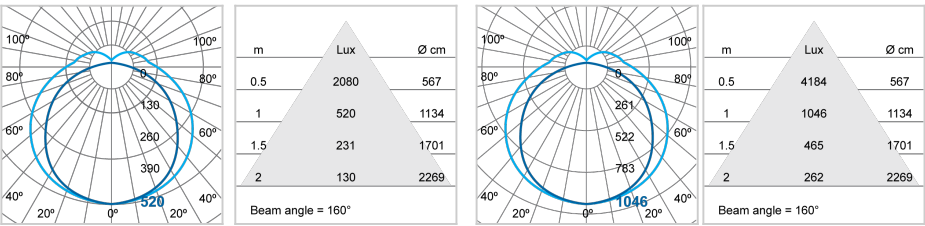
HAGON loop-in / loop-out installation (ON/OFF connection)



HAGON loop-in / loop-out installation (DALI connection)



PHOTOMETRIC DIAGRAM



LOGISTIC INFORMATION

MM Code	Packaging Unit	Outer Box Dimensions			Gross Weight per Outer Box
		L mm	W mm	H mm	
MM10968	pcs/unit	1237	374	204	kg
	18				19.4